

# ILLUSTRATIONS OF "K" SERIES (3/4 SHANKS)

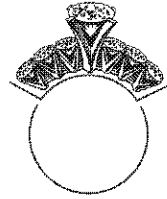
For determining maximum limits of cut-off top of ring that can be used with this series

## DIRECTIONS FOR USING DIAGRAMS

1. Determine best place to cut off top of ring.
2. Using diagram of proper closed finger size required, place top inside edge of ring next to top edge of diagram.
3. Determine if part of ring to be cut off falls within the lines which are the maximum limits for the particular size.

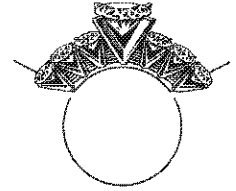
## EXAMPLE

Customer requires a size 5 closed



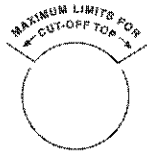
Cut-off top falls within maximum limits for size 5.

Order "K" series in proper width, height and metal



Cut-off top falls outside maximum limits for size 5.

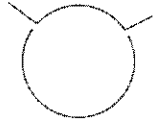
"K" series cannot be used. Try "J" series illustration.



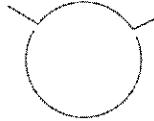
SIZE 3



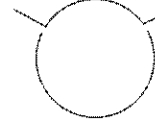
SIZE 3 1/2



SIZE 4



SIZE 4 1/2



SIZE 5



SIZE 5 1/2



SIZE 6



SIZE 6 1/2



SIZE 7



SIZE 7 1/2



SIZE 8



SIZE 8 1/2



SIZE 9



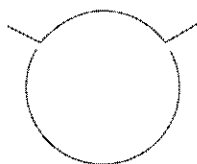
SIZE 9 1/2



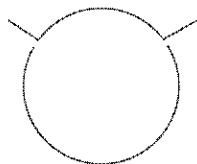
SIZE 10



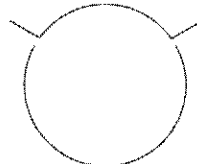
SIZE 10 1/2



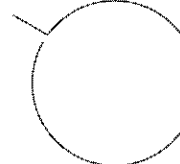
SIZE 11



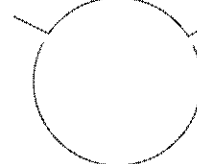
SIZE 11 1/2



SIZE 12



SIZE 12 1/2



SIZE 13

FOR IN BETWEEN 1/4 AND 3/4 SIZES, USE NEXT SMALLER ILLUSTRATION.

# ILLUSTRATIONS OF "J" SERIES (1/2 SHANKS)

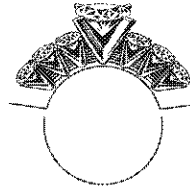
For determining maximum limits of cut-off top of ring that can be used with this series

## DIRECTIONS FOR USING DIAGRAMS

1. Determine best place to cut off top of ring.
2. Using diagram of proper closed finger size required, place top inside edge of ring next to top edge of diagram.
3. Determine if part of ring to be cut off falls within the lines which are the maximum limits for the particular size.

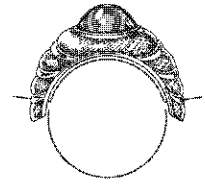
## EXAMPLE

Customer requires a size 5 closed



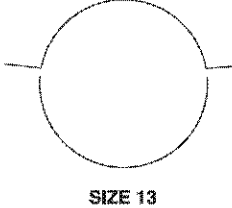
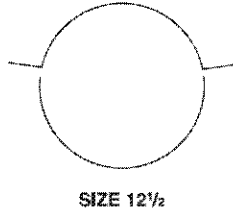
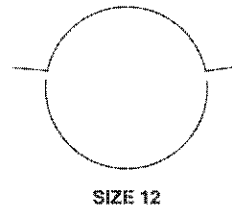
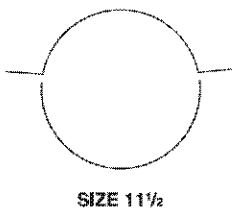
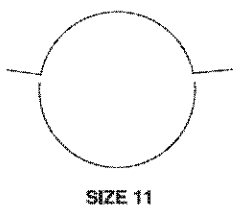
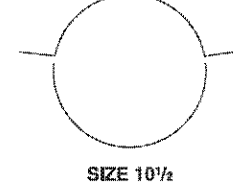
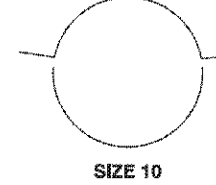
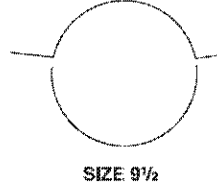
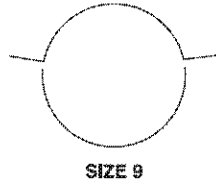
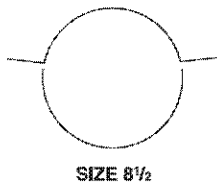
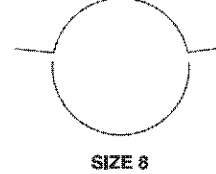
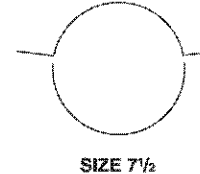
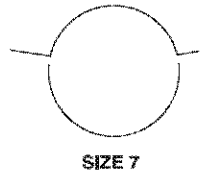
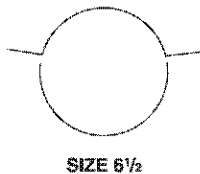
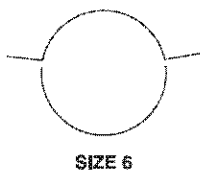
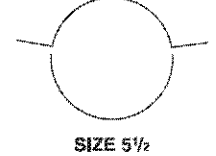
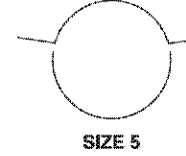
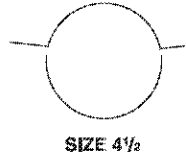
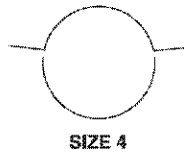
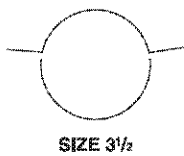
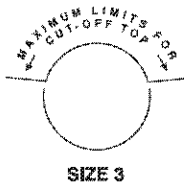
Cut-off top falls within maximum limits for size 5.

Order "J" series in proper width, height and metal



Cut-off top falls outside maximum limits for size 5.

"J" series cannot be used unless top can be cut shorter. See next to last paragraph page 5.



FOR IN BETWEEN 1/4 AND 3/4 SIZES, USE NEXT SMALLER ILLUSTRATION.